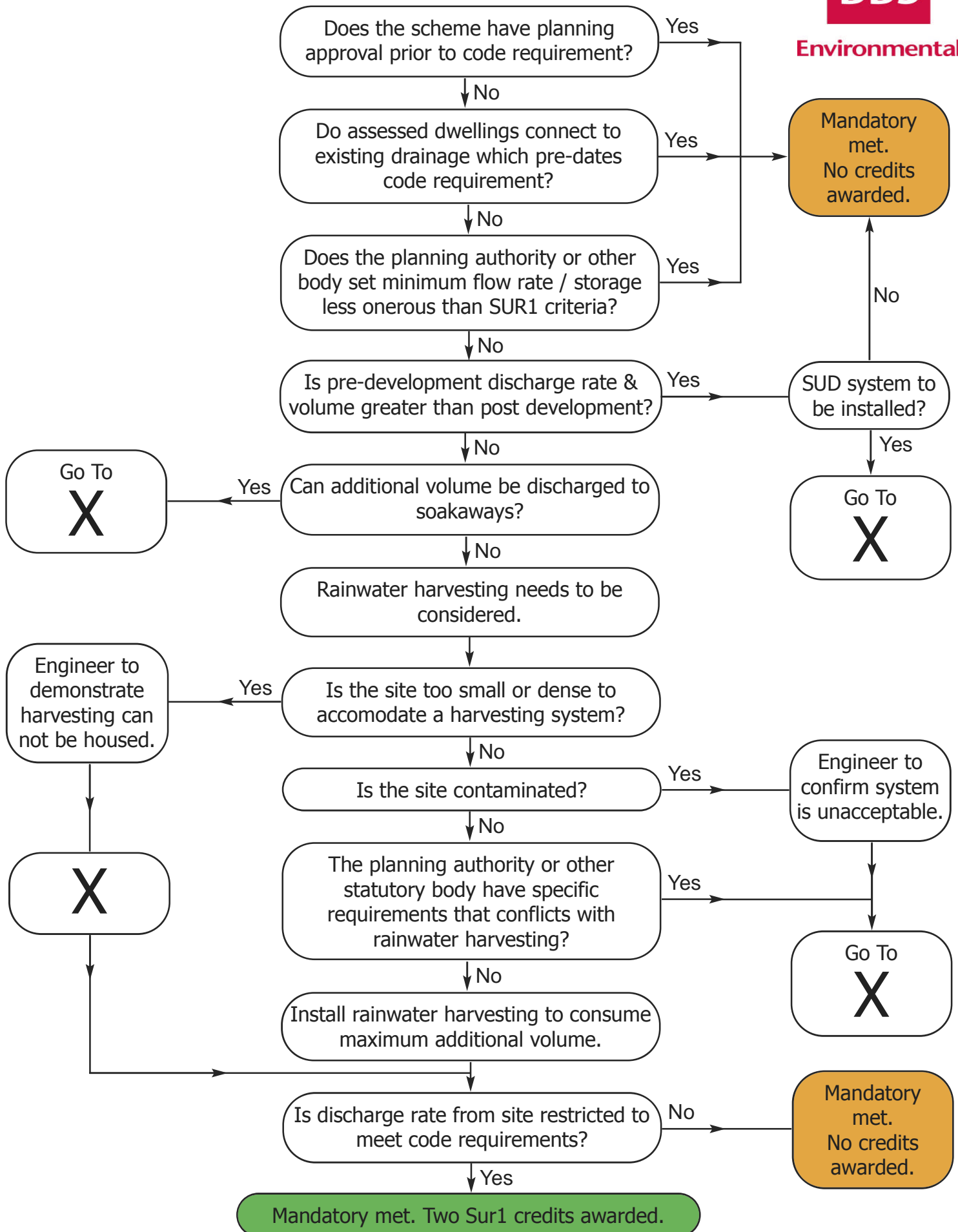


Surface Water (Sur1) Code Design Process



Environmental



The above guidance needs to be reviewed in conjunction with the appropriated Code for Sustainable Homes Guidance document as issued by the CLG. The above representation of the current Sur1 guidance is only the opinion of BBS Ltd and therefore should not be used in isolation to the approved Code for Sustainable Home Guidance documentation.